








Warehouse & Distribution Centre Data Sheet

The Challenges that SiYtE Addresses

-  Monitoring of 'roadways' to alert on obstructions, collisions and near misses.
-  Monitoring for people on 'roadways' and vehicles in pedestrian areas.
-  Logging lorry arrivals and departures to streamline unloading processes & managing loading bay operations efficiently.
-  Ensuring safety and standards compliance (auditing PPE, hand washing, etc).
-  Comprehensive environmental monitoring (air quality, noise, etc).
-  Planning energy efficiencies and reporting on sustainability objectives.
-  Security compliance (trespass, unauthorized vehicles, auditing gate/door status).

What SiYtE can offer



SiYtE Smart Analytics utilises IoT sensors and advanced vision analytics, providing real-time data, alerts, and insights to improve operational efficiency and safety.

Reporting Dashboard

- Real time reporting of current status of all metrics (e.g. air quality, forklift trips, etc) on Web dashboard and mobile app.
- Historical and comparative trend analysis
- Stakeholder specific dashboards – e.g. safety (e.g. collisions/near misses), process (e.g. vehicle tracking, people movement), energy (e.g. real time energy usage visibility).
- Ability to generate automated daily, weekly, monthly reports.

Workplace Insights

- Increased visibility to engage staff on compliance or process best practices using SiYtE's real-time insights, with comparative data to motivate teams.
- Detailed reporting on vehicle and pallet movements to streamline logistics operations.
- Promote and monitor compliance with essential health and safety practices such as regular handwashing, use of PPE, and adherence to overall safety protocols.
- Dashboards and visibility to engage staff on energy saving practices.

Real-time Alerts

- Alerting workflow to set thresholds on any/multiple parameters for real-time alerts.
- Multi-channel alerts including dashboards, e-mails, text messages, and mobile apps, ensuring timely notifications regardless of the interface monitored.
- Sample alerts: people in roadways, vehicle collision/near miss incidents, unauthorized vehicles, environmental metrics outside of thresholds or standards (temperature, humidity, air pollution), excessive energy being utilised.



Phased Approach

Phase 1: Use Case workshops and MVP capability

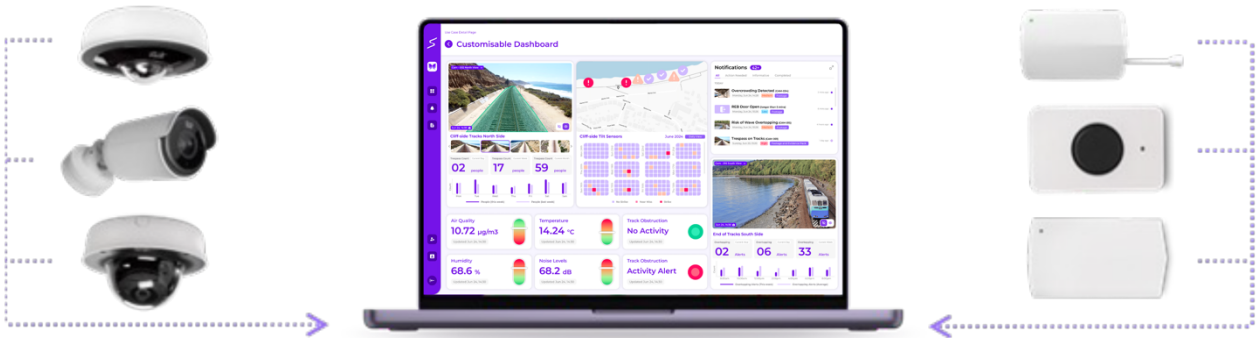


Figure 1 – Example camera and sensors linked to dashboard

- Staff interviews for use case development and to understand reporting and alerting workflows.
- Develop minimum viable product, integrating into existing cameras to implement priority CCTV and sensor-based use cases, including initial sensor networking technology.
- Validation and accuracy assessment.

Phase 2: Alerting and monitoring enhancements

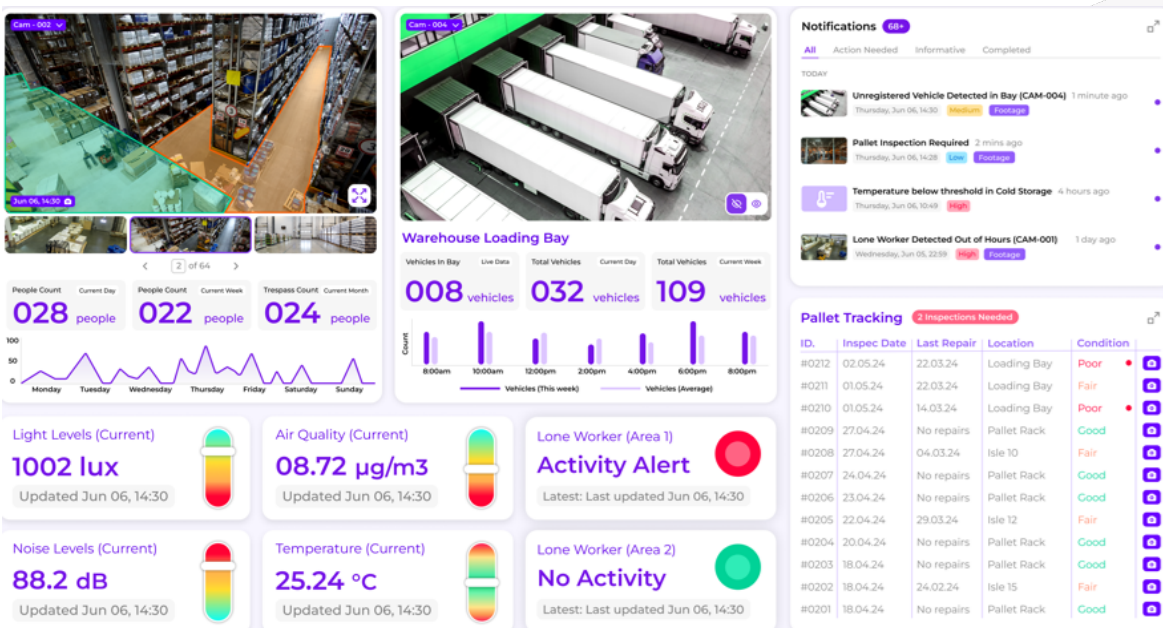


Figure 2 – Example SiYtE dashboard showing activity insights

- Scale to further cameras and areas.
- Introduce second phase user cases, including those requiring model training
- Add energy insights to be displayed in financial and carbon impact terms.